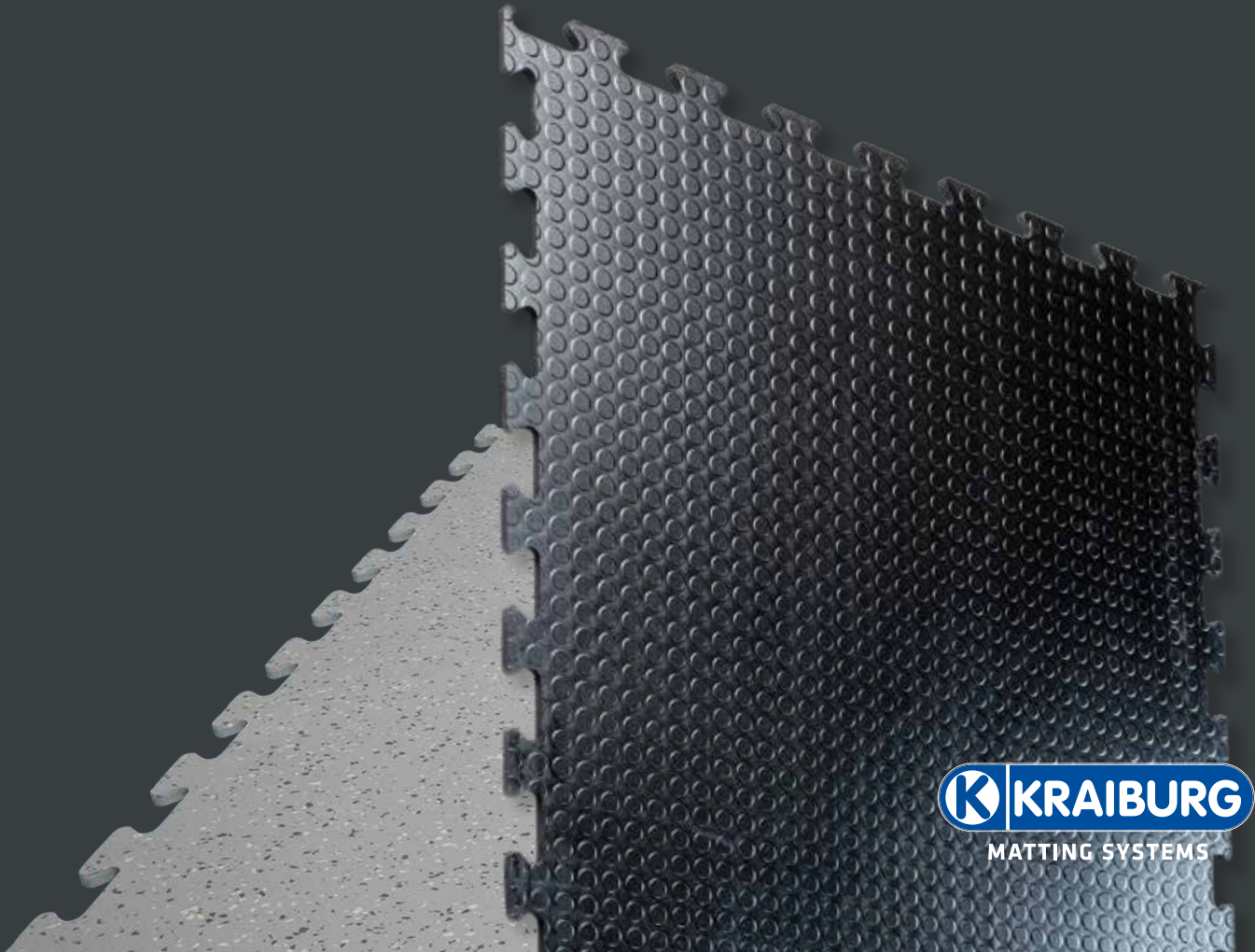


**moovetec**<sup>®</sup>

*the floor protection mat*



**ROBUST**  
**ROTATION**  
**FRIENDLY**  
**PASSABLE**



**KRAIBURG**  
MATTING SYSTEMS

# 1 Selection & load in comparison



versatile







flame-retardant floor protection mat



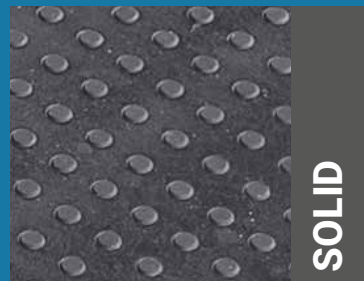
universal/ combinable



robust & sustainable

Floor protection mat	 Forklift	 Ant	 Hand pallet truck	 Order picking trolley
Varioment	x	x	x	x
Floor	x	x	x	x
Solid W				x
Solid H			x	x
Solid F	x	x	x	x
Solid G				x
Solid ESD				x
Unigrip			x	x
Unimat	x	x	x	x

## 2 Surfaces







## Only the best live long

Our MOOVETEC® flooring solutions stand exclusively for the highest standards in quality, longevity and optimum protection for your floor. With their experience from more than 70 years of competence in rubber, our research and development team therefore makes no compromises in their choice of raw materials.

## Solutions for all challenges

We offer flooring solutions for floor and impact protection, noise damping, cutting resistance and trafficability issues as well as many other requirements.

Another advantage of MOOVETEC® is its compatibility with the ERGOLASTEC® workplace mats.



## FLOORING SOLUTIONS

Different properties for individual requirements


- **flame-retardant**
- **noise-damping**
- **trafficable**
- **puzzle system solution**
- **heat insulation**



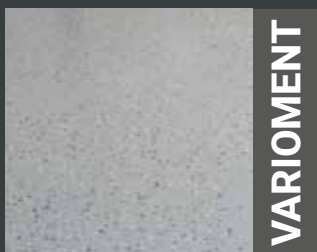
## The flexible floor protection mat suitable for daily use under the harshest conditions

- o Visually attractive, **easy-to-clean surface**
- o **High flexibility** perfect for industrial floors in daily use
- o Free from PVC, phthalate, softeners and chlorinated polymers due to the **use of sustainable natural rubber.**
- o Increased safety due to **high fire protection** properties for indoor public areas.
- o Easy to lay due to **water jet-cut connection system** (jigsaw puzzle).

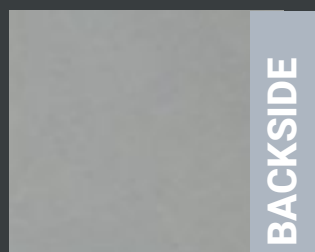


Surface	Size	Properties	Material	Hardness	Weight	Colour
VARIOMENT	969 x 969 x 9 mm*	Very high footfall sound insulation (15 dB)  R9-non-slip safety  Fire protecting class Cfl-s2	Rubber	70 Shore A	12 ± 1 kg	

## Surface and backside geometries



VARIOMENT



BACKSIDE



forklift



lift truck



ant



order picking trolley

\*Tolerance in accordance with EN ISO 24346








# FLOOR

## The hard-wearing rubber flooring for high mechanical stress

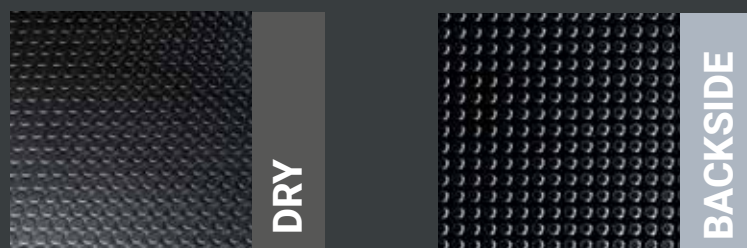
- o Driving and impact noises are absorbed by the **soft underside**
- o Suitable for **intensive walking** and **work traffic**
- o The industrial floor **withstands heavy mechanical stress** (e.g. forklift trucks, etc.) and ensures **good trafficability**.
- o The industrial floor is the ideal floor for **production halls, warehouses, picking areas**.
- o MOOVETEC rubber mat **insulates against cold from the floor**
- o The trafficable rubber flooring has **fire protection class Bfl-S1\*\***.



m flame resistant

Surface	Size	Properties	Material	Hardness	Weight	Colour
FLOOR Dry	1330 x 709 x 12 mm*	Insulating noise-insulating Trafficable (pallet truck, ...) Antistatic  Fire protecting class Bfl-s1	SBR***	85 Shore A	6,4 ± 1 kg	

## Surface and backside geometries



forklift



lift truck



ant



order picking trolley

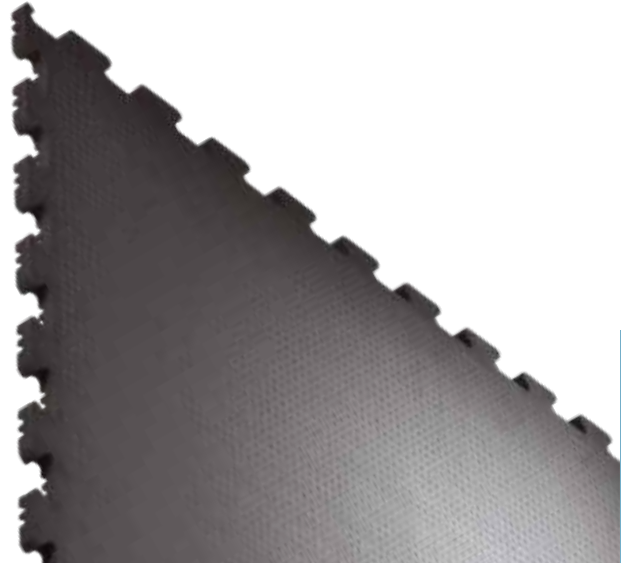
\*Tolerances in accordance with DIN ISO 3302 - 1 M4;

\*\*\*Slight discolouration of light floors possible





# SOLID



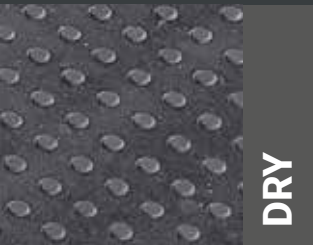
universal / combinable

## The robust and trafficable rubber floor protection mat

- o Due to its different grades of hardness, the rubber mat is **ideal for work areas** on which picking carts, hand-driven and E-pallet trucks, forklift trucks, etc. are driven
- o MOOVETEC rubber mat **insulates against cold from the floor**
- o The flat cylindrical studs on the bottom ensure **high stability and firm hold** when driving over or setting down components.

Surface	Size	Properties	Material	Hardness	Weight	Colour
SOLID- <b>W</b> Dry soft (Light loads, picking trolley, swivel chair)	1350 x 1000 x 16 mm*	Antistatic	SBR**	55 Shore A	25 ± 1 kg	■
SOLID- <b>H</b> Dry hard (Medium loads, hand pallet trucks)	1350 x 1000 x 16 mm*	Antistatic	SBR**	70 Shore A	25 ± 1 kg	■
SOLID- <b>F</b> Dry very hard (High loads, forklifts, electric pallet trucks)	1350 x 1000 x 16 mm*	Antistatic	SBR** Bfl-s1	85 Shore A	30 ± 1 kg	■
SOLID- <b>G</b> Dry grey (Light loads, picking trolley, swivel chair)	1350 x 1000 x 16 mm*		NBR** oil resistant	55 Shore A	25 ± 1 kg	■
SOLID- <b>ESD</b> Dry soft ESD (Medium loads, hand pallet truck)	1350 x 1000 x 16 mm*	ESD	SBR**	55 Shore A	25 ± 1 kg	■

## Surface and backside geometries



## ADVANTAGE

The SOLID floor protection mat can be **combined with an ERGOLASTEC** ergonomic mat



For further information see **table on page 2**

\* Tolerances according to DIN ISO 3302 - 1 M4; \*\* It may cause slight discoloration on light floors



# UNIMAT/ UNIGRIP

## The floor protection mat made from recycled tyre granulate

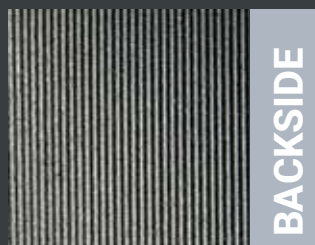
- o Due to its different grades of hardness, the rubber mat is **ideal for work areas** on which picking carts, hand-driven and E-pallet trucks, forklift trucks, etc. are driven
- o **Sustainable mat** due to the use of **recycled tyre granulate**
- o MOOVETEC unimat/unigrip **insulates against cold from the floor**
- o Very firm hold
- o The jigsaw puzzle shape of the mat **enables it to be laid easily** and loosely and scores high marks above all with its firm hold.



m robust / sustainable

Surface	Size	Properties	Hardness	Weight	Colour
UNIMAT*	975 x 975 x 11 mm**	Bonded rubber granulate	85 Shore A	6,4 ± 1 kg	■
UNIGRIP*	975 X 975 X 18 mm**	Bonded rubber granulate	85 Shore A	6,4 ± 1 kg	■

## Surface and backside geometries



<b>UNIMAT</b> forklift ant		<b>UNIGRIP</b> lift truck order picking trolley	
----------------------------------	--	---	--

\* Recycling compound (may contain white fluff from tyre fabric)  
 \*\* Tolerances in accordance with DIN ISO 3302 - 1 M4



## Laying tips

1. Lay mats on the base
2. Spray the jig-saw puzzle ends with soapy water
3. Fit mats together like a jig-saw puzzle using a rubber mallet
4. Make adjustments on site (e.g., around the feet of workbenches): The rubber mats can be cut easily with a knife

## The ideal solution for more workplace flexibility

- The prerequisite is a suitably firm base such as concrete/screed, synthetic resin, asphalt, tiles, etc.
- The base should be level and clean
- The mats should be stored at +5°C up to max. +30°C prior to laying



## Individual advice

The KRAIBURG MATTING SYSTEMS team offers you a comprehensive consulting and customer service. Whether on-site consultation, by mail or on the phone, our team is always at your disposal. Customer proximity is particularly important to us, so we offer the following services especially on site:

- o Measurement and laying service
- o After-Sales-Service

Just contact us, we look forward to your inquiry!



**Video**  
Floor protection mats  
& installation service

# Our product portfolio at KRAIBURG Matting Systems

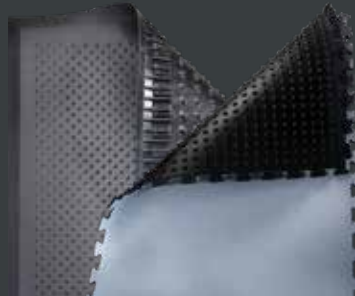


Ask your field sales consultant for information or  
simply visit [www.MATTING-SYSTEMS.at](http://www.MATTING-SYSTEMS.at)

**ergolastec**<sup>®</sup>

*the workplace mat*

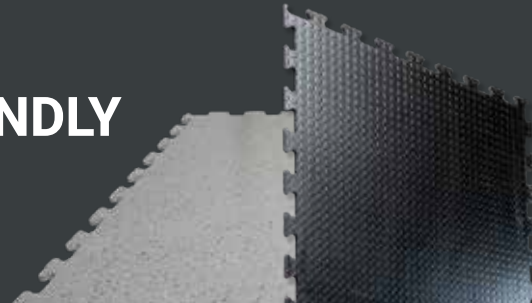
**ERGONOMIC  
ROTATION FRIENDLY  
LONG LASTING**



**moovetec**<sup>®</sup>

*the floor protection mat*

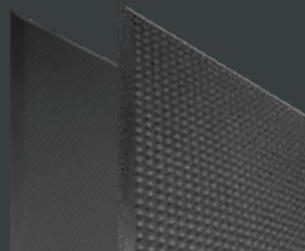
**ROBUST  
ROTATION FRIENDLY  
TRAFFICABLE**



**ergopurtec**<sup>®</sup>

*the lightweight workplace mat*

**LIGHTWEIGHT  
ROTATION FRIENDLY  
HEAT INSULATING**



KRAIBURG Austria GmbH & Co. KG  
MATTING SYSTEMS

Webersdorf 11, 5132 Geretsberg, Österreich  
Tel.: +43 (0)7748 7241-0  
Fax: +43 (0)7748 7241-400  
[ergolastec@kraiburg.at](mailto:ergolastec@kraiburg.at)

  
made in AUSTRIA