

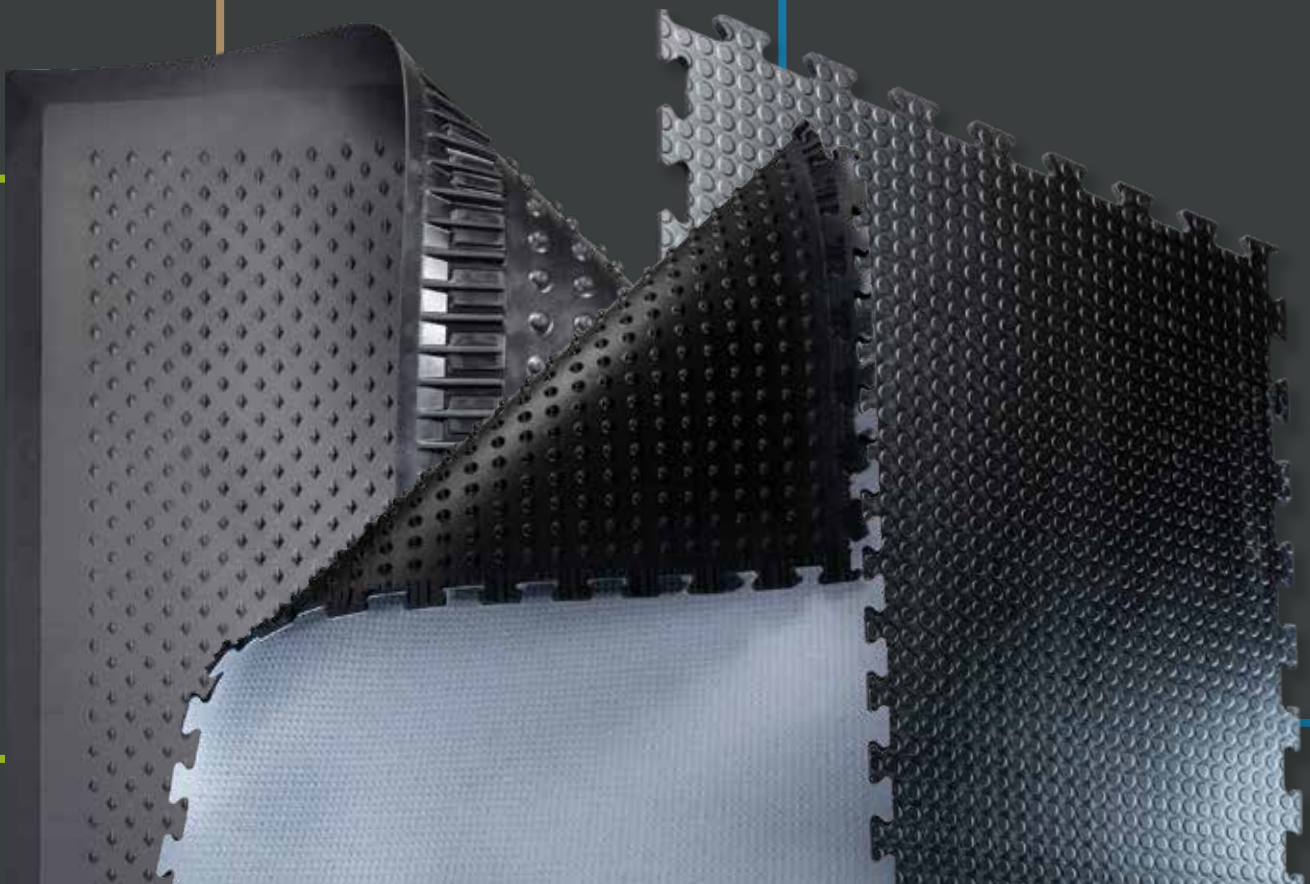
YOUR PARTNER FOR

# OPTIMAL WORKPLACE SOLUTIONS

**ergolastec**®

**moovetec**®

**ergopurtec**®





## In-house research and development

As the most important raw material, the rubber compound plays a key role in the durability and dimensional stability of AGR-certified ERGOLASTEC® floor protection mats. With over 60 years of experience in rubber expertise, our research and development team makes no compromises when selecting raw materials. In addition to many years of compounding expertise, customised and individual development also plays a decisive role here. Customer proximity motivates our team to continuously optimise our quality mats - for optimal and healthy standing, walking and turning behaviour for employees.

## KRAIBURG Austria



**334**

More than 341 employees



**>60**

more than 60 years of experience



**87,7** Mio

Turnover of € 87,7million in 2023

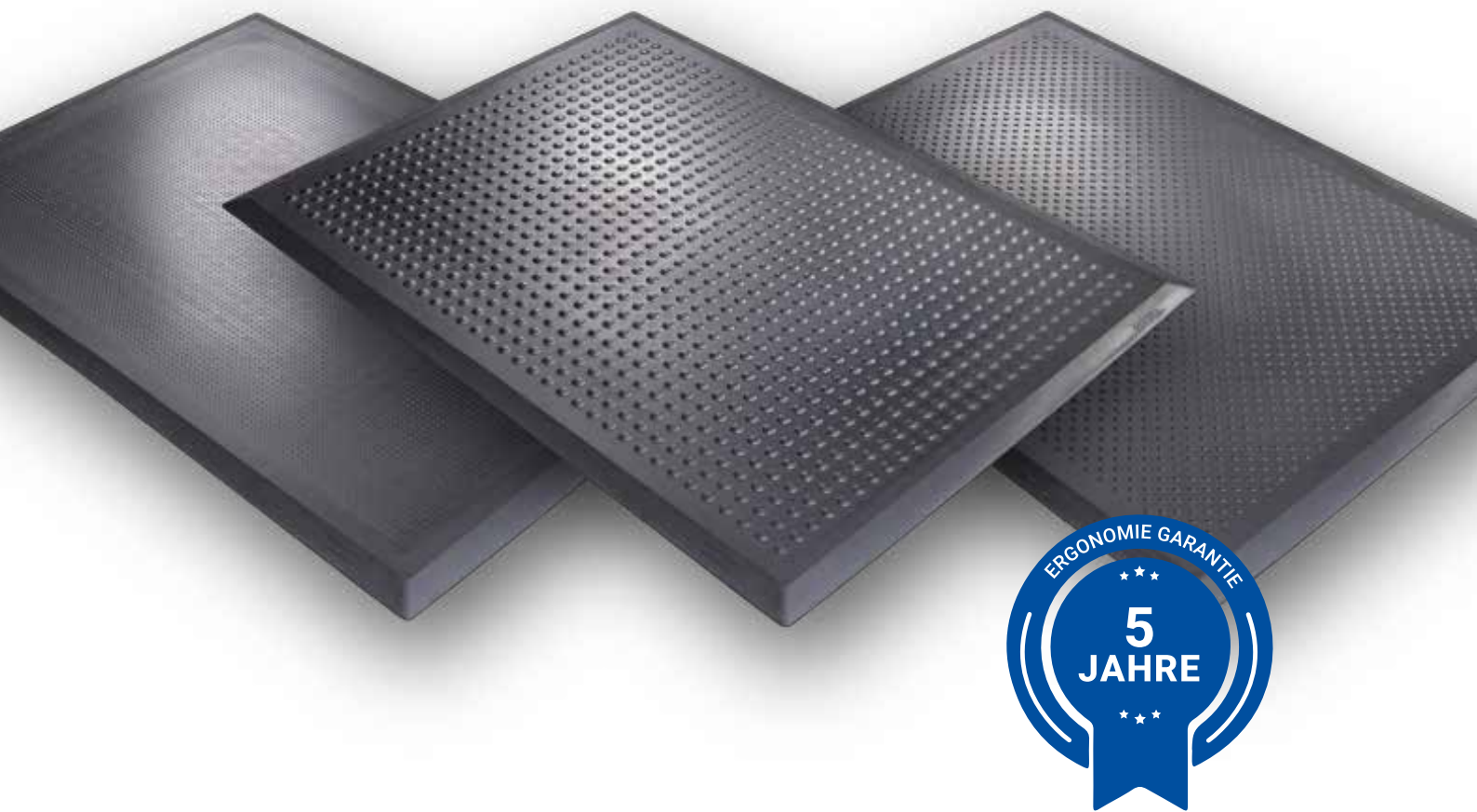


## KRAIBURG Group

KRAIBURG was founded in 1947 as a family business that was already specialising in rubber at the time. KRAIBURG Holding SE & Co. KG, based in Waldkraiburg/Upper Bavaria, was founded in 2005. It manages around 2500 employees who are active in nine strategic business areas.

In addition to traditional products such as technical rubber compounds and rubber for tyre retreading, the divisions of the KRAIBURG Group manufacture a wide range of rubber products. KRAIBURG has also developed into a leading global supplier in the Thermoplastic Elastomers (TPE) division.





## Made in Austria

All mixing and manufacturing processes for the ERGOLASTECH® industrial mats and their production take place exclusively at our headquarters in Geretsberg, Upper Austria. Customer proximity is very important to us. This is why our sales department and our dealer network also operate decentrally from many locations to quickly and personally respond to your individual needs and special challenges.

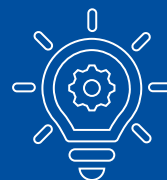
- **More than 70 years of expertise in manufacturing and processing high-quality and special rubber materials.**
- **Experts in workplace ergonomics**
- **High level of expertise in developing optimal rubber compounds, highly efficient tyre treads, and mat surface geometries.**
- **Europe-wide, customer-oriented sales and comprehensive consulting and services**
- **Reduced noise emission**



## Your demands – our standard

On 1 June 2007, the new EU Chemicals Regulation No. 1907/2006 on the Registration, Evaluation, Authorisation, and Restriction of Chemicals (REACH) came into effect. KRAIBURG understands its REACH obligations and is involved through the Austrian Chamber of Commerce (WKO) and the German Rubber Industry Association (wdk). For „substances of very high concern“ (SVHC substances), REACH stipulates an information obligation if such an SVHC substance is present in concentrations higher than 0.1 percent by weight in the preparation or in the product.

**The products made by Kraiburg Austria GmbH & Co. KG do not contain any of these substances.**



## Laying tips

1. Lay mats on the base
2. Spray the jig-saw puzzle ends with soapy water
3. Fit mats together like a jig-saw puzzle using a rubber mallet
4. Make adjustments on site (e.g., around the feet of workbenches): The rubber mats can be cut easily with a knife.

## The ideal solution for more flexibility in the workplace

- Requirement is a fixed surface, such as concrete / screed, resin floor, asphalt, tile, etc.
- The surface must be even, clean and smooth
- The mats must be stored between +5°C and max. +30°C before they are laid.





## Individual advice

The KRAIBURG MATTING SYSTEMS team offers you a **comprehensive consulting and customer service**. Whether on-site consultation, by email or on the phone, our team is always at your disposal. Customer proximity is particularly important to us, so we offer the following services especially on site:

- Measurement and laying service
- After-Sales-Service

**Just contact us, we look forward to your inquiry!**



Video ERGOLASTEC®  
Floor protection mats  
& installation service



## Cleaning recommendation

1. **FIRST CLEANING/CARE:** To prolong the life, a suitable wiping care agent can be applied evenly in a wet-wiping process after the first cleaning. The dry wiping care agent film can be polished\*\* using a suitable polishing pad.
2. **MAINTENANCE CLEANING/CARE (BY MACHINE):** Optimum cleaning results can be achieved by vacuum scouring using an active or micro-fibre pad or a red pad\* with a suitable wiping care agent. Wipe and pick up dust using suitable micro-fibre wipes, mop fleeces or prepared dust-collecting cloths. To maintain a coherent and visually attractive surface appearance, it is recommended to polish\*\* with a suitable polishing pad as required. Adhering, water-soluble or emulgatable contaminations are removed by wiping wet.
3. **INTERMEDIATE CLEANING** (used on the VARIO and VARIO<sup>ESD</sup> workplace mat): To remove footprints and heel marks and to maintain a coherent and visually attractive surface appearance, it is recommended to clean as required with a suitable wiping care agent using a suitable polishing pad.
4. **INTENSIVE CLEANING:** Wet scouring using an active or micro-fibre pad or a red pad and a suitable cleaning agent. Since water-soluble wiping care agents are recommended, the use of basic cleaners is not usually necessary. After sucking off surface dirt with a wet vacuum cleaner, apply a care agent as during first cleaning.

### Basic instructions:

- Please observe the instructions in the product and safety data sheets of the used cleaning and care agents.
- Please contact the MATTING-SYSTEMS team if you have any questions

\*\* Use a single-disc polisher with rotation speeds between 1,000 – 1,500 rpm.





## Certifications

- AGR Certifications
- Qualitative test to determine antibacterial efficacy
- Fire behaviour
- ESD



\*Download area Certifications

## Dimensional stability even under extreme conditions

- Oil resistance
- Resistance to chippings
- Stable connection of the jig-saw puzzle system
- Temperature resistance (-35°C to +95°C)
- Firm lay
- Slip safety



**Video** ERGOLASTEC® floor protection mat and the use of chips



## Why the right mat makes all the difference

Workplace mat in the test

- **rotation-friendly + non-slip**
- **ergonomics + work safety**



Video Ergonomic workstation mat in test





**Video** Fire behaviour of the  
ERGOLASTEC® workplace mats

## How flame-retardant workplace mats avoid fires

Flying sparks which occur during work such as welding, cutting or grinding constitute a considerable fire risk. They can reach temperatures of several thousand degrees Celsius and ignite highly inflammable material in just a few seconds. Because of their extreme heat, it is extremely important to take suitable safety precautions. One measure are fire-resistant workplace mats with the European Fire Protection Class certification EN13501-1. If a spark from a machine hits a "highly flame-retardant" workplace mat with the classification Bfl-s1\*, the flames will be smothered immediately and the development of smoke prevented.

Electrostatic discharges also pose a threat to persons. ESD workplace mats of the ERGOLASTEC® brand give flying sparks no chance. ERGOLASTEC® ESD, ERGOLASTEC® Oil, ERGOLASTEC® Vario<sup>ESD</sup>.

In cooperation with the Geschenkschmiede Bernhofer company in Austria, the behaviour of the flame-resistant ERGOLASTEC® fire workplace mats from KRAIBURG MATTING SYSTEMS was tested under high temperatures (1,025 °C). The results were impressive; see for yourselves and scan the QR code.





*the workplace mat*



**ERGONOMIC  
ROTATION FRIENDLY  
LONG LASTING**

## Durability through quality

Without exception, our ERGOLASTEC® industrial mats stand for the highest standards in quality and safety. As the most important raw material, the rubber compound plays an essential role in achieving the longevity and dimensional stability of ERGOLASTEC® mats. With our experience spanning more than 70 years of rubber competence, our research and development team makes no compromises in the selection of raw materials.



Multi-purpose workplace mat



The mat resistant to oil, grease and gasoline



Customized workplace mat



Electrically conductive industrial mat



Flame-retardant mat Bfl-s1



Antibacterial workplace



## The technical advantages of the ERGOLASTEC® rubber mat

Our customers choose the ERGOLASTEC® industrial mat according to the criteria that are most important to them. With our high-quality mats, we have developed a product that meets all demands placed on ergonomic workplaces:

- **Functional and user-friendly surface and underside designs**
- **High durability and robustness through high quality KRAIBURG mixtures**
- **Absolute reliability: oil, acid, and base resistance**
- **Combinable mat format: flexible connection solutions for individual requirements**
- **Precise and closely interlocked puzzle system for sustainable, secure fixation**
- **Very good slip resistance: Average mat weight of approx. 19 kg**
- **Guaranteed solid foothold and non-skid property (outer edges bevelled 20°)**
- **Excellent dimensional stability in cold, hot, and wet conditions (temperature resistance -25°C to +95°C)**
- **Excellent tear propagation properties**
- **Reduced noise emission**



## AGR-certified workout ground

The secret to our back-protecting rubber mat lies in the interplay of **special geometric sides (surface and back) that stimulate continuous compensation movements**. This means that the anti-fatigue mats are developed in such a way that the body naturally oscillates and the leg and calf muscles thereby permanently remain slightly in motion. **This reduces the one-sided pressure on the intervertebral discs and ensures a balanced load on the back musculature.** The spine is stabilised.



Weitere Infos zum Thema  
AGR am Arbeitsplatz finden sie hier:

# 19,3 %

of all days of incapacity  
for work (AU) in 2023 were  
Muscular and skeletal disorders

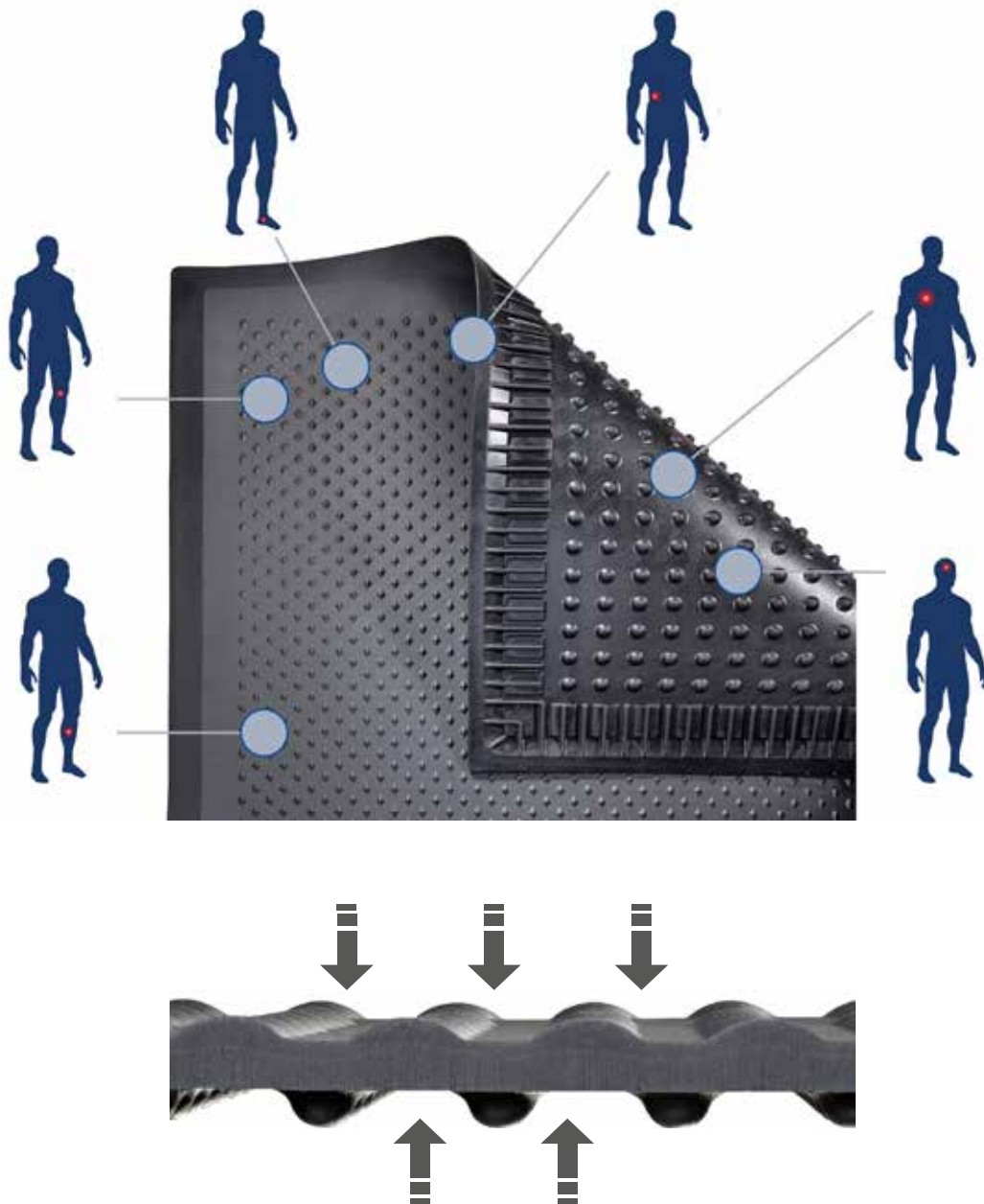
=

# 14,2 days

per case of illness due to  
back pain per year.

Source: BKK-Gesundheitsreport 2023





## ERGOLASTEC® workout ground for powerful employees

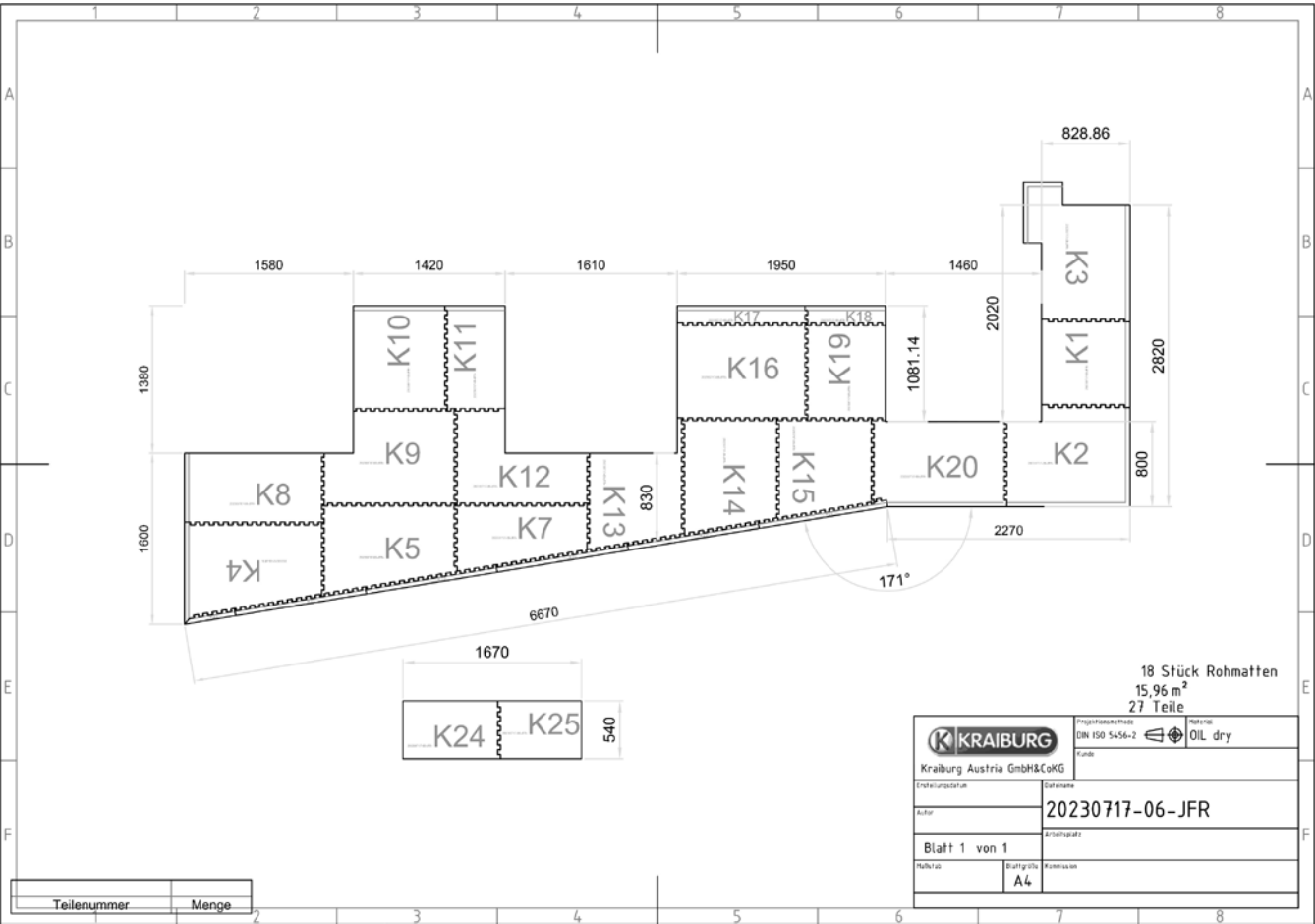
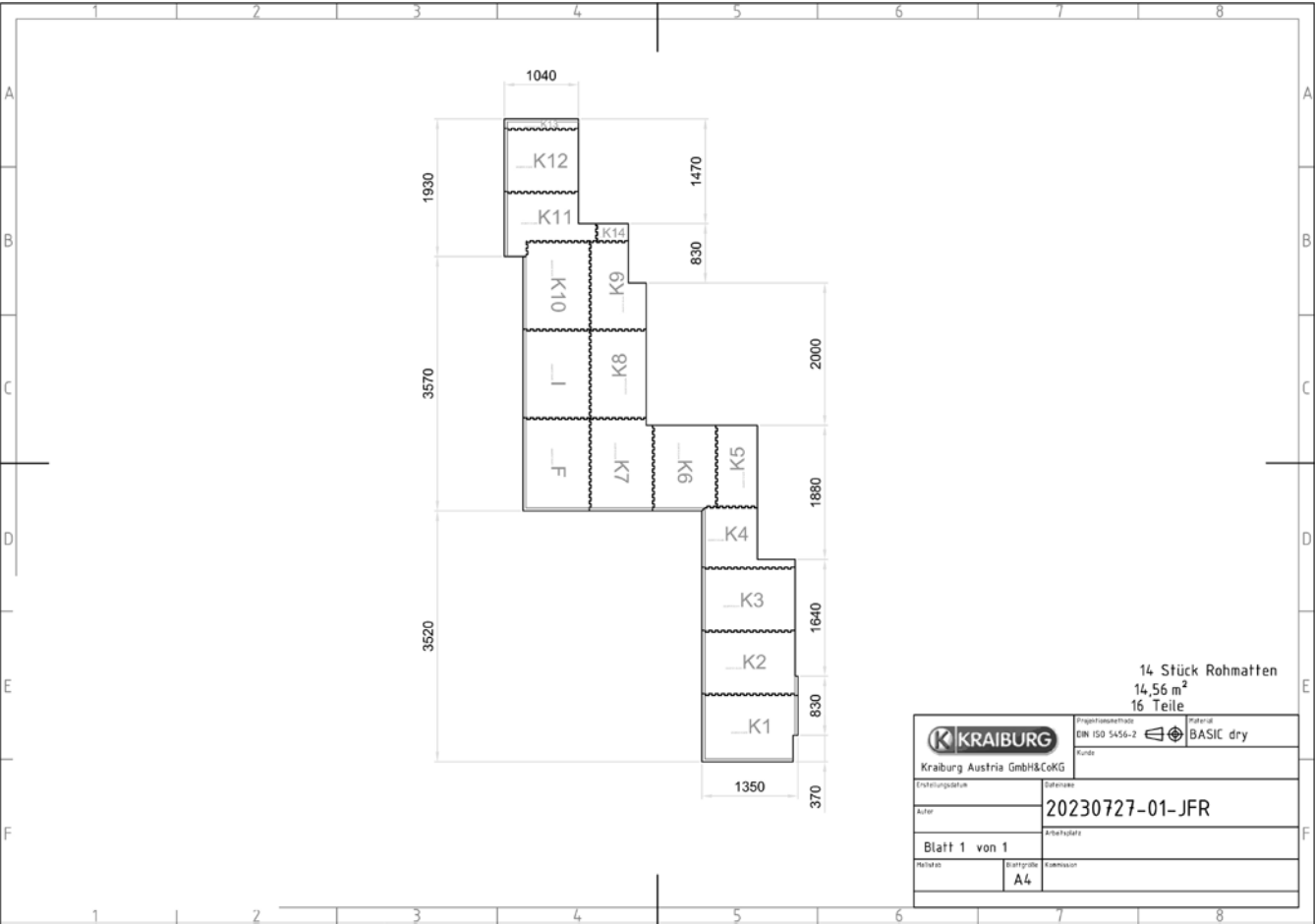
- Activation of the muscle pump
- Dynamization of the leg muscles
- Reduction of fatigue symptoms
- Shock damping effect when standing and walking

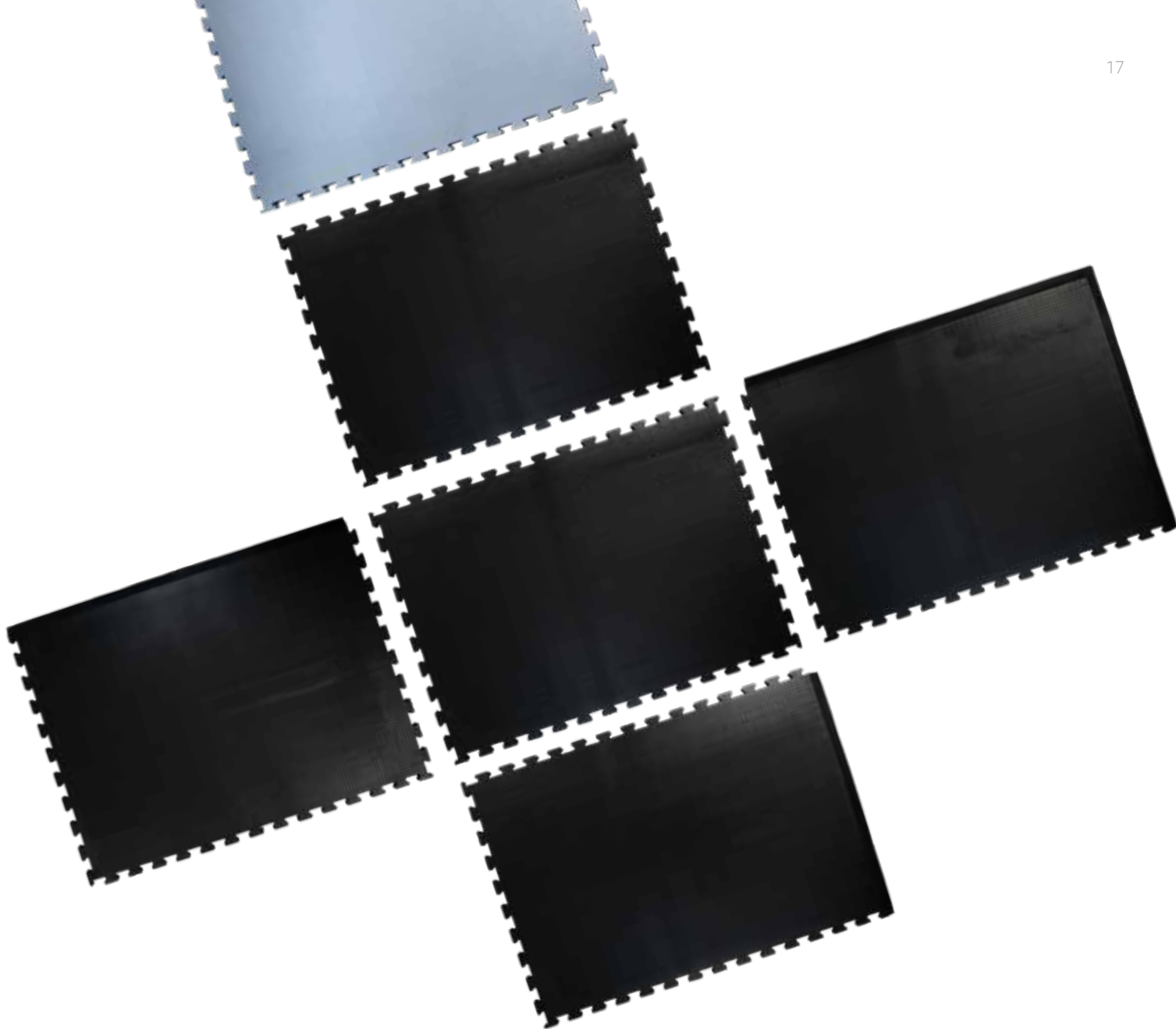
The AGR quality cachet (Aktion Gesunder Rücken = Campaign for Healthier Backs):  
 Certified and recommended by Association Forum Healthy Back – Better Living and  
 Federal Association of German Back Schools. More information:  
 AGR e.V., Pf. 103, D - 27443 Selsingen, Phone + 49 4284/92 69 990, [www.agr-ev.de](http://www.agr-ev.de)



# CAD-planned workplaces

High-precision workplace: Our CAD-drawn workplaces provide optimum efficiency and design. Experience the future of workplace planning, well thought out down to the finest detail.





## Tailor-made workplaces

Benefit from our **flexible interlocking system for application-oriented individual solutions**: based on the exact dimensions, we design your workplace according to the precise KRAIBURG standards. Our ERGOLASTEC® team offers you the **necessary advice** for your tailor-made rubber mats as well as an **installation service**. Just get in touch. **Your challenge is our motivation!**



Video Customised  
Workplace mats from  
ERGOLASTEC®





*the floor protection mat*



**ROBUST  
ROTATION  
FRIENDLY  
PASSABLE**

## **Only the best live long**

Our MOOVETEC® flooring solutions stand exclusively for the highest standards in quality, longevity and optimum protection for your floor. With their experience from more than 70 years of competence in rubber, our research and development team therefore makes no compromises in their choice of raw materials.

## **Solutions for all challenges**

We offer flooring solutions for floor and impact protection, noise damping, cutting resistance and trafficability issues as well as many other requirements.

Another advantage of MOOVETEC® is its combinability with the ERGOLASTEC® workplace mats.



## FLOORING SOLUTIONS

Different properties for individual requirements

- **flame-retardant**
- **noise-damping**
- **trafficable**
- **puzzle system solution**
- **heat insulation**



*the lightweight workplace mat*



**LIGHTWEIGHT  
ROTATION FRIENDLY  
HEAT INSULATING**

## **Solutions for dry application areas**

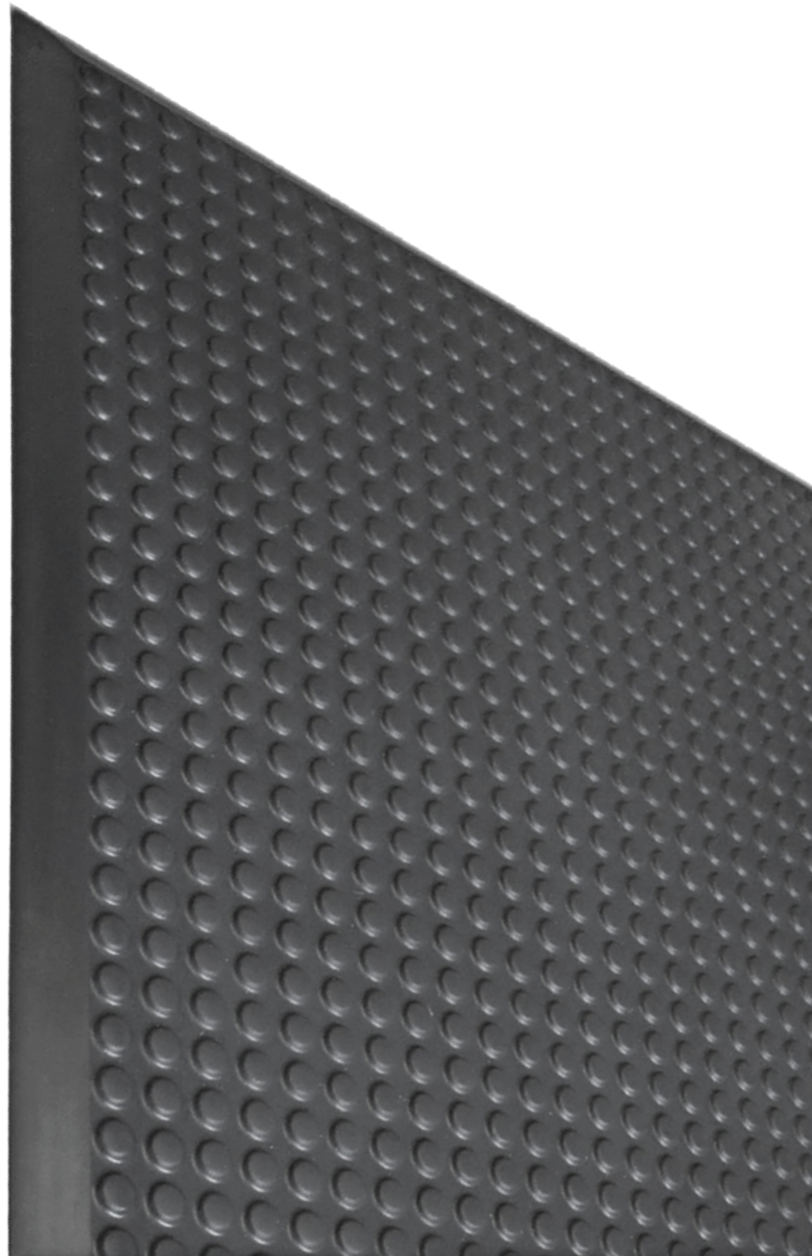
The durable polyurethane material allows the mats to be used at production, warehouse, assembly and packing workstations as well as at processing machines and workbenches.

## **Prevention of risks**

The use of floor protection mats promotes dynamic muscle work at walking and standing workplaces. The continuous muscular movements stimulate the blood circulation and ensure the supply of oxygen to the muscles. The dynamic muscle work due to the workplace mats therefore reduces the risks of musculoskeletal disorders (MSD).

The workplace mat material also provides protection against unhealthy floor cold.





## The technical ADVANTAGES of the ERGOPURTEC® workplace mat

- The anti-fatigue mats are cold-insulating, vibration-damping, anti-slip and easy-care
- ERGOPURTEC® mats are resistant to oils, solvents and many chemicals
- The ERGOPURTEC® series features high turning mobility
- The closed-cell surface makes the anti-fatigue mat easy to clean
- The long-lasting bonded seam enables safe workplace design
- ERGOPURTEC® is a lightweight mat made of foamed PU material that can be easily removed from the workplace and replaced, for example for cleaning work.



## Workplace mats = training ground for top-performing staff

- |    |  |
|----|--|
| 1. | Activation of the muscle pump                    |
| 2. | Dynamisation of the leg muscles                  |
| 3. | Prevention of muscle cramps                      |
| 4. | Promotes the circulation of tissue fluids        |
| 5. | Reduction of fatigue signs                       |
| 6. | Adequate pressure relief                         |
| 7. | Reduction of joint and back problems             |
| 8. | Insulation against cold floors                   |
| 9. | Shock-absorbing effect when standing and walking |





## Cleaning recommendation

- Sweeping
- Vacuuming
- Wet cleaning with a mild cleaning agent (pH value 5-9)

If liquid gets onto the underside of the mat during cleaning, it must be turned over and laid out to dry until the underside of the mat is completely dry.

High-pressure cleaning is not recommended!



## Laying tips

1. The prerequisite is a suitably firm base such as concrete/screed, synthetic resin, asphalt, tiles, etc.
2. The base must be level, clean and smooth

# Our product portfolio at KRAIBURG Matting Systems

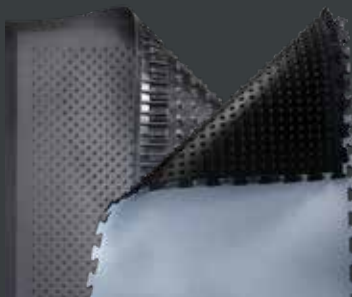
Ask your field sales consultant for information or  
simply visit [www.MATTING-SYSTEMS.at](http://www.MATTING-SYSTEMS.at)



**ergolastec**®

*the workplace mat*

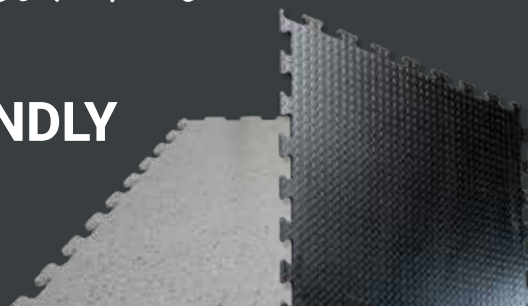
**ERGONOMIC  
ROTATION FRIENDLY  
LONG LASTING**



**moovetec**®

*the floor protection mat*

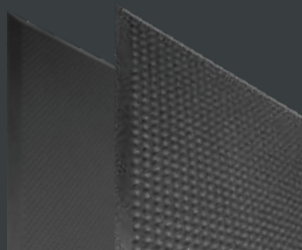
**ROBUST  
ROTATION FRIENDLY  
TRAFFICABLE**



**ergopurtec**®

*the lightweight workplace mat*

**LIGHTWEIGHT  
ROTATION FRIENDLY  
HEAT INSULATING**



KRAIBURG Austria GmbH & Co. KG  
MATTING SYSTEMS

Webersdorf 11, 5132 Geretsberg, Österreich  
Tel.: +43 (0)7748 7241-0  
Fax: +43 (0)7748 7241-400  
[ergolastec@kraiburg.at](mailto:ergolastec@kraiburg.at)

  
made in AUSTRIA