



## The oil-resistant ergonomic mat with the AGR seal of approval.

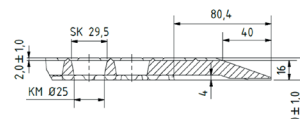
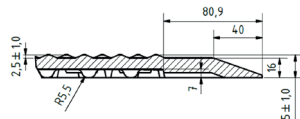
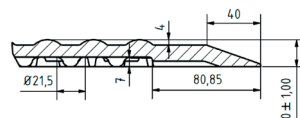
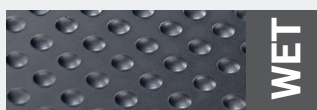
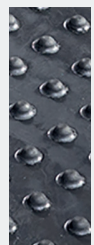
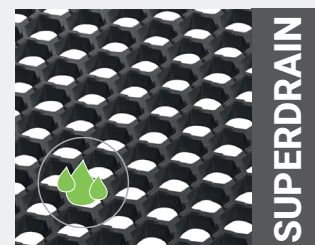
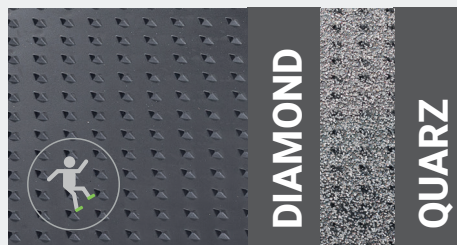
- o Suitable for **oil-resistant workstations**, such as workbenches, turning and milling machines or chemical laboratories.
- o The rubber mat is resistant to **various oils**, greases, commercially available cooling lubricants, fuels, and non-polar solvents.
- o ideal for workplaces with a **high risk of slipping**.
- o **Recommendable: mat with quartz coating** to improve slip resistance on extremely slippery workplaces.



Surface	Size	Fire protecting class	Material	Hardness	Colour
OIL Dry	1350 x 1000 x 16 mm*	Bfl-s1**	NBR***	55 Shore A	
OIL Wet	1350 x 1000 x 20 mm*	Bfl-s1**	NBR***	55 Shore A	
OIL Diamond	1350 x 1000 x 20 mm*	Bfl-s1**	NBR***	55 Shore A	
OIL Superdrain	1350 x 1000 x 18 mm*	Bfl-s1**	NBR***	55 Shore A	

\* Tolerances according to DIN ISO 3302 - 1 M4; \*\* In accordance with EN 13501 resistant to short-term flying sparks and welding beads \*\*\* It may cause slight discoloration on light soils

## Surface and backside geometries



DRY = dry working conditions; WET = wet working conditions; DIAMOND = slippery working conditions; QUARTZ = Very slippery working conditions; SUPERDRAIN = wet working conditions